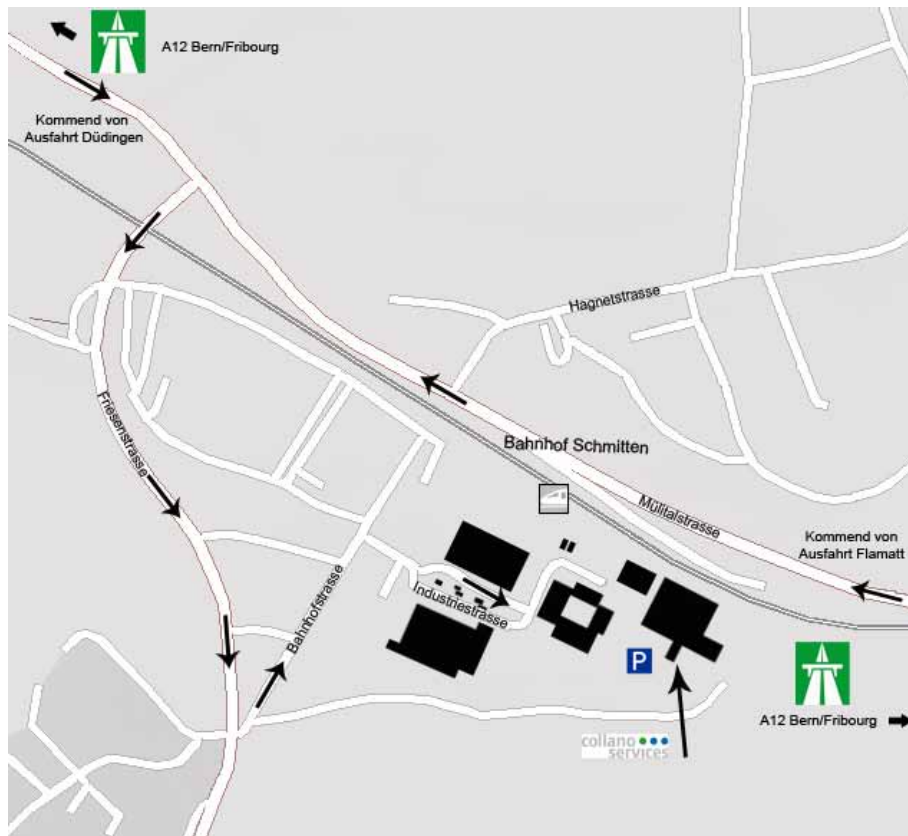


How to find us in Schmitten



Collano Services Extrusions AG
 Industriestrasse 18
 3185 Schmitten, Switzerland
 Phone +41 26 497 81 11, Fax +41 26 497 81 01
 xiro@collano.com

Journey by car

From Bern toward Fribourg

(Approx. 25 km, 30 minutes)

- Take freeway A12 toward Fribourg
- Take exit 10 to Flamatt
- Take the main road toward Fribourg (5 km)
- In Mühlietal turn right heading toward Schmitten
- After the train station turn left toward Schmitten
- Cross over the railway tracks and approx. 500 m later turn left onto «Bahnhofstrasse»
- After approx. 150 m turn right toward the industrial area (follow the signs to Collano)

From Fribourg toward Bern

(Approx. 15 km, 17 minutes)

- Take freeway A12 toward Bern
- Take Exit 9 toward Düdingen
- At the roundabout go toward Murten/Laupen
- Turn right toward Laupen/Bern (approx. 800 m)
- Turn right at the end of Bundtels heading to Schmitten (approx. 1000 m)
- Turn right toward Schmitten
- Cross over the railway tracks and approx. 500 m later turn left onto «Bahnhofstrasse»
- After approx. 150 m turn right toward the industrial area (follow the signs to Collano)

Journey by train

From Zürich Airport Kloten

- Zürich Airport – Bern
- Bern – Schmitten or Bern – Fribourg – Schmitten

From Basel

- Basel – Bern
- Bern – Schmitten or Bern – Fribourg – Schmitten

From Genf

- Genf – Fribourg – Schmitten

To reach Collano, take the underground crossing and turn left onto «Industriestrasse» after the Schumacher company. Follow the signs to Collano.